

Recorded Crime June Quarter 2006

Northern Territory – key findings*

Explanatory Notes

Largely as a result of its small population, statistics in the Northern Territory can be highly volatile with large swings from one period to the next.

Consequently recorded crime statistics are presented over an extended two-year period to present the current period's data within the context of any longer term trends.

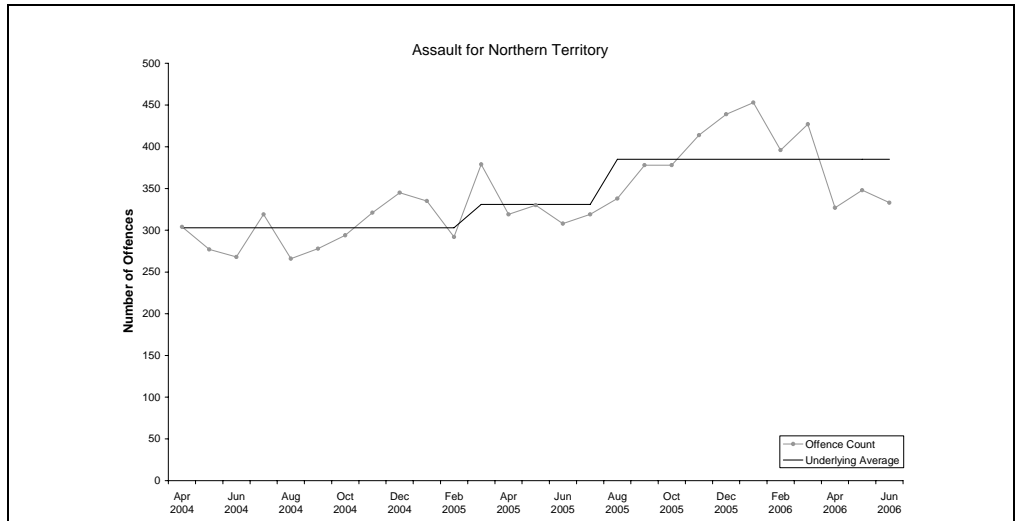
The underlying average smooths out volatility and identifies major changes in the level of crime.

ASSAULT

Underlying average – The underlying average level of recorded *assault* offences has ranged between 303 and 385 offences per month during the past nine quarters. Its current level of **385 per month** is at the higher end of the range.

Trend – Over the past 12 months no trend was identified.

Quarterly comparisons – There were 1008 recorded *assault* offences in the Territory in the current quarter, a **decrease of 21% (268)** from the previous quarter, but an increase of 5% (51) from the same quarter the previous year.

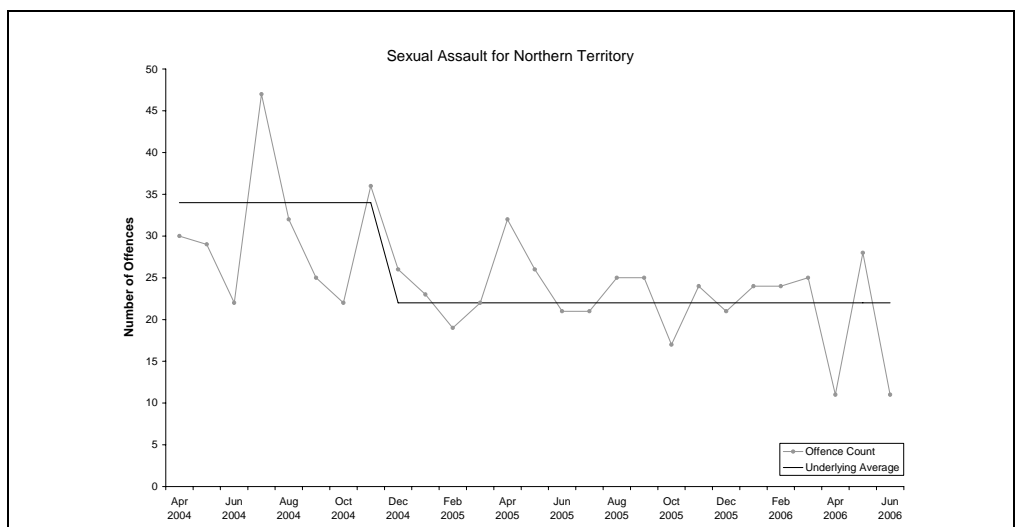


SEXUAL ASSAULT

Underlying average – The underlying average level of recorded *sexual assault* offences has ranged between 22 and 34 offences per month during the past nine quarters. Its current level of **22 per month** is at the lower end of the range.

Trend – Over the past 12 months no trend was identified.

Quarterly comparisons – There were 50 recorded *sexual assault* offences in the current quarter, a **decrease of 32% (23)** from the previous quarter and a decrease of 37% (29) from the same quarter the previous year.



* Source: The Northern Territory Quarterly Crime & Justice Statistics, Issue 16: June Quarter 2006

Recorded Crime June Quarter 2006

Northern Territory – key findings*

Explanatory Notes

Largely as a result of its small population, statistics in the Northern Territory can be highly volatile with large swings from one period to the next.

Consequently recorded crime statistics are presented over an extended two-year period to present the current period's data within the context of any longer term trends.

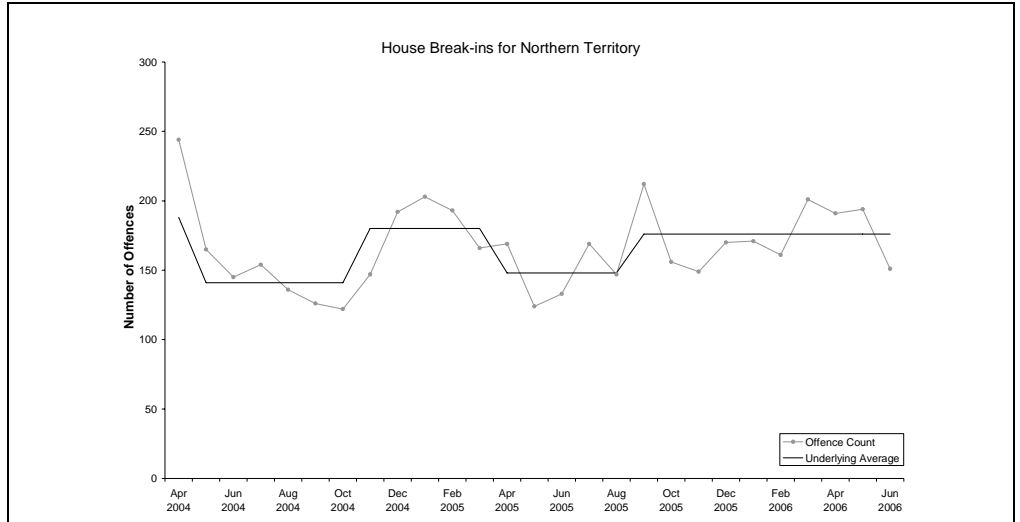
The underlying average smooths out volatility and identifies major changes in the level of crime.

HOUSE BREAK-INS

Underlying average – The underlying average level of *house break-ins* has ranged between 141 and 188 offences per month during the past nine quarters. Its current level of **176 per month** is in the middle of the range.

Trend – Over the past 12 months no trend was identified.

Quarterly comparisons – There were 536 *house break-ins* in the current quarter, an **increase of 1% (3)** from the previous quarter and an increase of 26% (110) from the same quarter the previous year.

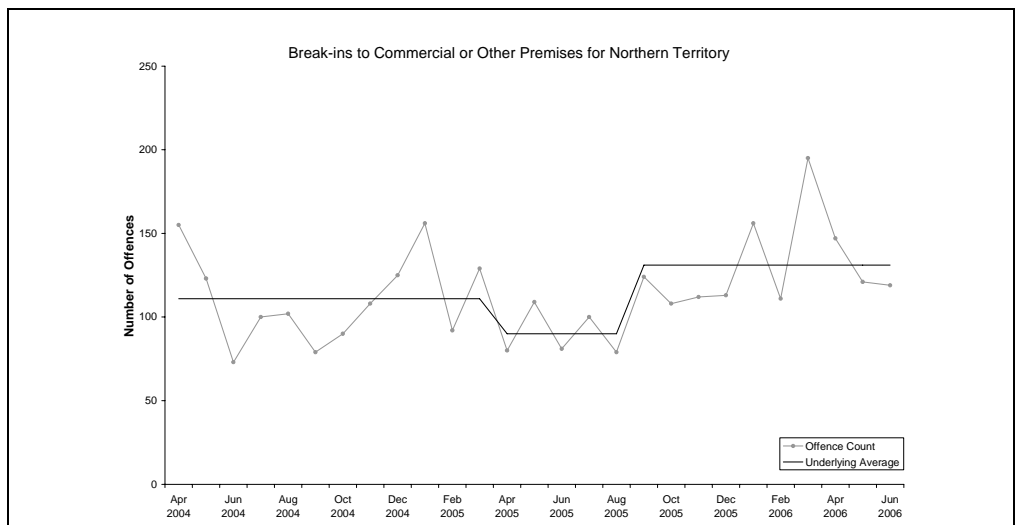


BREAK-INS TO COMMERCIAL OR OTHER PREMISES

Underlying average – The underlying average level of *break-ins to commercial or other premises* has ranged between 90 and 131 offences per month during the past nine quarters. Its current level of **131 per month** is at the higher end of the range.

Trend – Over the past 12 months no trend was identified.

Quarterly comparisons – There were 387 offences relating to *break-ins to commercial or other premises* in the current quarter, a **decrease of 16% (75)** from the previous quarter, but an increase of 43% (117) from the same quarter the previous year.



* Source: The Northern Territory Quarterly Crime & Justice Statistics, Issue 16: June Quarter 2006

Recorded Crime June Quarter 2006 Northern Territory – key findings*

Explanatory Notes

Largely as a result of its small population, statistics in the Northern Territory can be highly volatile with large swings from one period to the next.

Consequently recorded crime statistics are presented over an extended two-year period to present the current period's data within the context of any longer term trends.

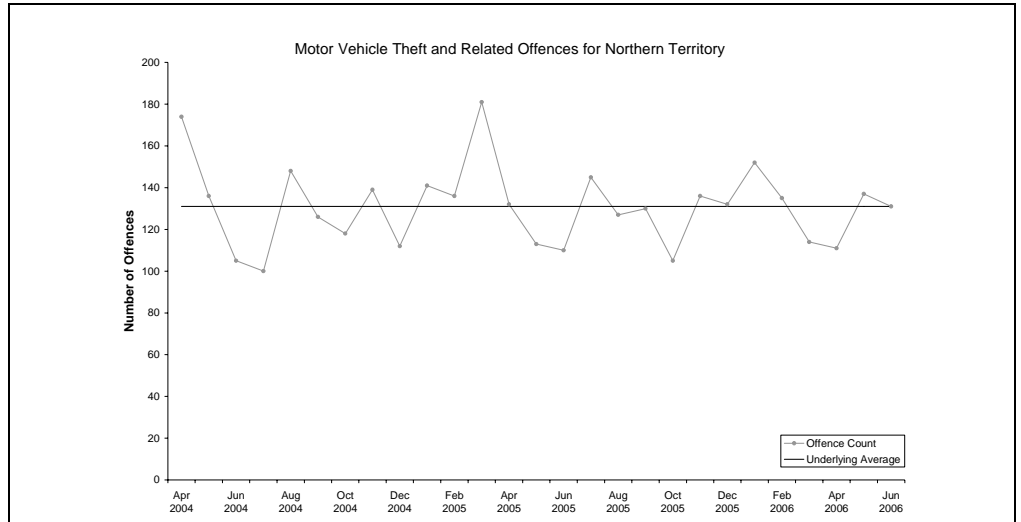
The underlying average smooths out volatility and identifies major changes in the level of crime.

MOTOR VEHICLE THEFT AND RELATED OFFENCES

Underlying average – The underlying average level of *motor vehicle theft and related offences* has remained stable at **131 offences per month** during the past nine quarters.

Trend – Over the past 12 months no trend was identified.

Quarterly comparisons – There were 379 *motor vehicle theft and related offences* in the current quarter, a **decrease of 5% (22)** from the previous quarter, but an increase of 7% (24) from the same quarter the previous year.



* Source: The Northern Territory Quarterly Crime & Justice Statistics, Issue 16: June Quarter 2006

Recorded Crime June Quarter 2006 Northern Territory – key findings*

Explanatory Notes

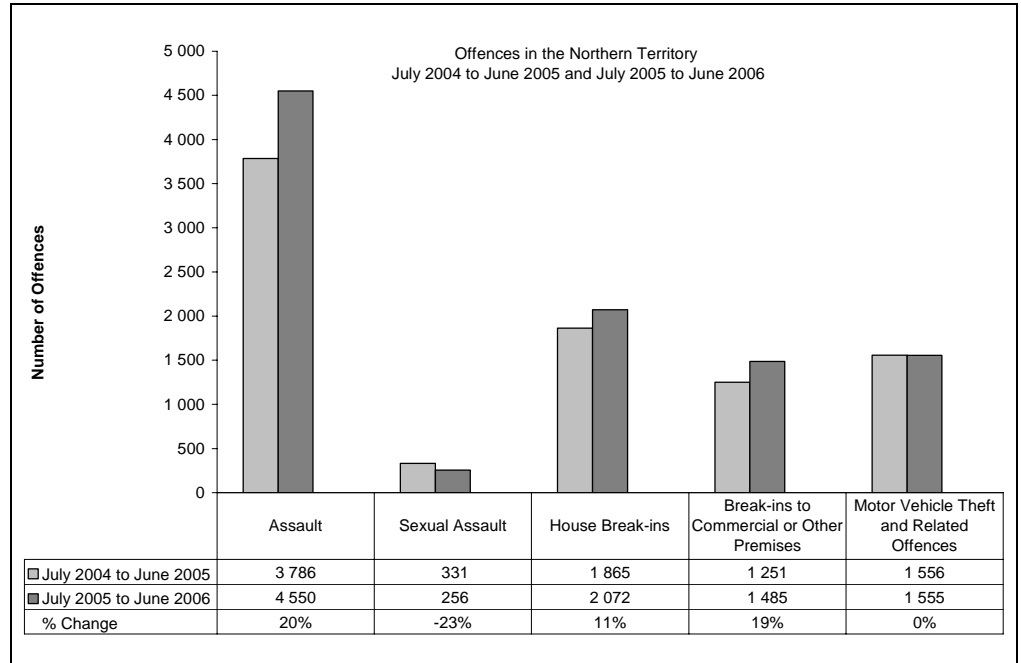
Largely as a result of its small population, statistics in the Northern Territory can be highly volatile with large swings from one period to the next.

Consequently recorded crime statistics are presented over an extended two-year period to present the current period's data within the context of any longer term trends.

The underlying average smooths out volatility and identifies major changes in the level of crime.

TWELVE-MONTH COMPARISON

Twelve-month figures provide comparable information on how crime is tracking from one 12 month period to the next.



Assault

During the 12 months to the end of June 2006 a total of 4550 *assault* offences were recorded, **20% (764) more** than the previous 12 months.

Sexual Assault

During the 12 months to the end of June 2006 a total of 256 *sexual assault* offences were recorded, **23% (75) less** than the previous 12 months.

House Break-ins

During the 12 months to the end of June 2006 a total of 2072 *house break-ins* were recorded, **11% (207) more** than the previous 12 months.

Break-ins to Commercial or Other Premises

During the 12 months to the end of June 2006 a total of 1485 *break-ins to commercial or other premises* were recorded, **19% (234) more** than the previous 12 months.

Motor Vehicle Theft and Related Offences

During the 12 months to the end of June 2006 a total of 1555 *motor vehicle theft and related offences* were recorded, **less than 1% (1) less** than the previous 12 months.

* Source: The Northern Territory Quarterly Crime & Justice Statistics, Issue 16: June Quarter 2006

Recorded Crime June Quarter 2006

Darwin – key findings*

Explanatory Notes

Largely as a result of its small population, statistics in the Northern Territory can be highly volatile with large swings from one period to the next.

Consequently recorded crime statistics are presented over an extended two-year period to present the current period's data within the context of any longer term trends.

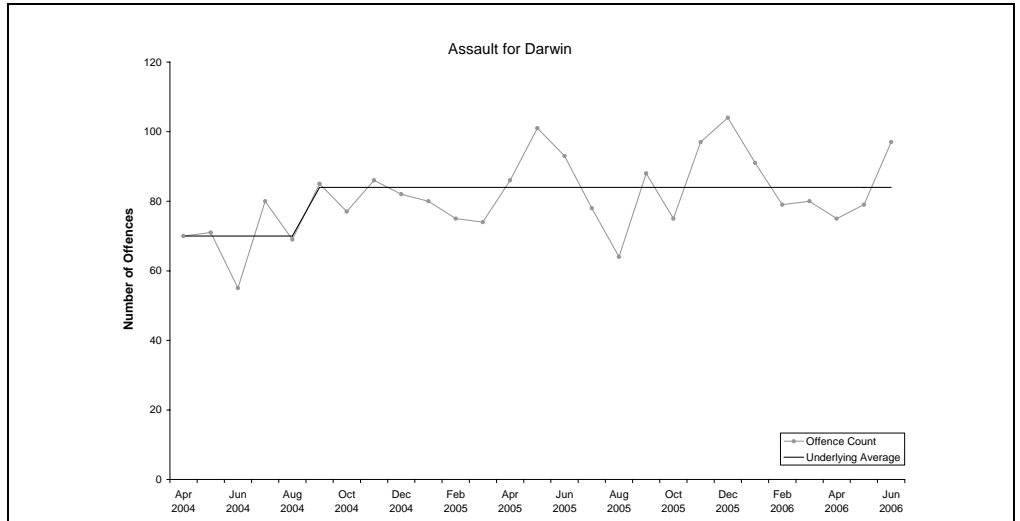
The underlying average smooths out volatility and identifies major changes in the level of crime.

ASSAULT

Underlying average – The underlying average level of recorded *assault* offences has ranged between 70 and 84 offences per month during the past nine quarters. Its current level of **84 per month** is at the higher end of the range.

Trend – Over the past 12 months no trend was identified.

Quarterly comparisons – There were 251 recorded *assault* offences in Darwin in the current quarter, an increase of **less than 1% (1)** from the previous quarter, but a decrease of 10% (29) from the same quarter the previous year.

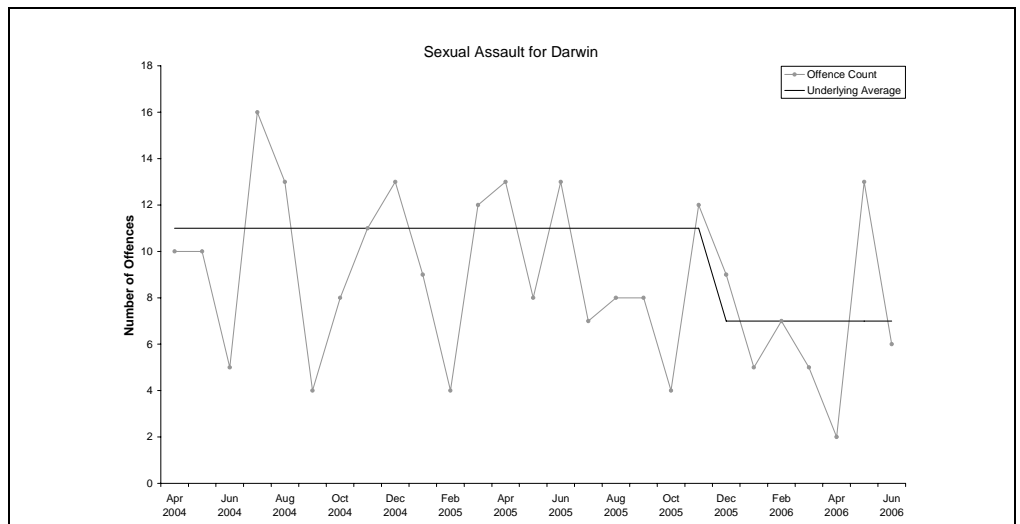


SEXUAL ASSAULT

Underlying average – The underlying average level of *sexual assault* offences has ranged between 7 and 11 offences per month during the past nine quarters. Its current level of **7 offences per month** is at the lower end of the range.

Trend – Over the past 12 months no trend was identified.

Quarterly comparisons – There were 21 recorded *sexual assault* offences in the current quarter, an **increase of 24% (4)** from the previous quarter, but a decrease of 38% (13) from the same quarter the previous year.



* Source: The Northern Territory Quarterly Crime & Justice Statistics, Issue 16: June Quarter 2006

Recorded Crime June Quarter 2006

Darwin – key findings*

Explanatory Notes

Largely as a result of its small population, statistics in the Northern Territory can be highly volatile with large swings from one period to the next.

Consequently recorded crime statistics are presented over an extended two-year period to present the current period's data within the context of any longer term trends.

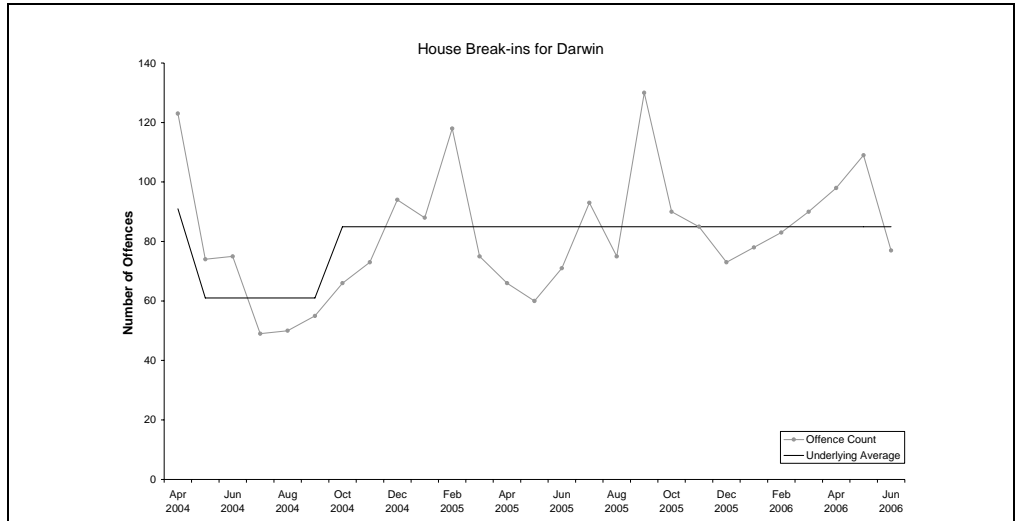
The underlying average smooths out volatility and identifies major changes in the level of crime.

HOUSE BREAK-INS

Underlying average – The underlying average level of *house break-ins* has ranged between 61 and 91 offences per month during the past nine quarters. Its current level of **85 per month** is at the higher end of the range.

Trend – Over the past 12 months no trend was identified.

Quarterly comparisons – There were 284 *house break-ins* in the current quarter, an **increase of 13% (33)** from the previous quarter and an increase of 44% (87) from the same quarter the previous year.

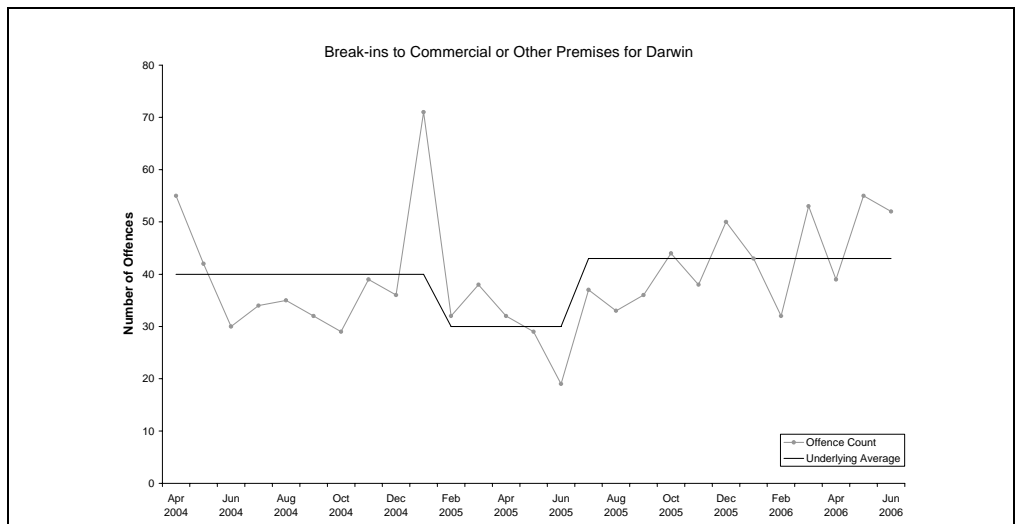


BREAK-INS TO COMMERCIAL OR OTHER PREMISES

Underlying average – The underlying average level of *break-ins to commercial or other premises* has ranged between 30 and 43 offences per month during the past nine quarters. Its current level of **43 per month** is at the higher end of the range.

Trend – Over the past 12 months an upward trend was identified.

Quarterly comparisons – There were 146 offences relating to *break-ins to commercial or other premises* in the current quarter, an **increase of 14% (18)** from the previous quarter and an increase of 83% (66) from the same quarter the previous year.



* Source: The Northern Territory Quarterly Crime & Justice Statistics, Issue 16: June Quarter 2006

Recorded Crime June Quarter 2006

Darwin – key findings*

Explanatory Notes

Largely as a result of its small population, statistics in the Northern Territory can be highly volatile with large swings from one period to the next.

Consequently recorded crime statistics are presented over an extended two-year period to present the current period's data within the context of any longer term trends.

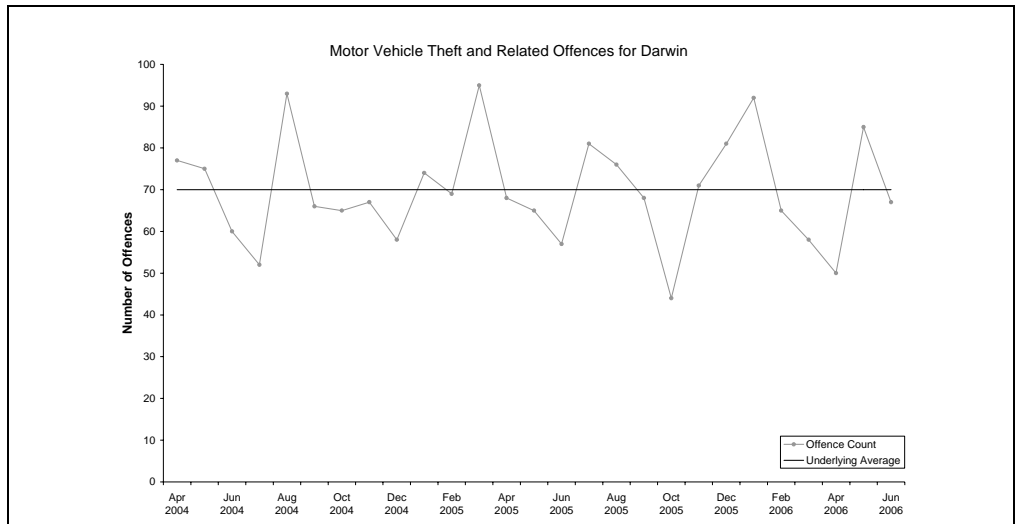
The underlying average smooths out volatility and identifies major changes in the level of crime.

MOTOR VEHICLE THEFT AND RELATED OFFENCES

Underlying average – The underlying average level of *motor vehicle theft and related offences* has remained stable at **70 per month** during the past nine quarters.

Trend – Over the past 12 months no trend was identified.

Quarterly comparisons – There were 202 *motor vehicle theft and related offences* recorded in the current quarter, a **decrease of 6% (13)** from the previous quarter, but an increase of 6% (12) from the same quarter the previous year.



* Source: The Northern Territory Quarterly Crime & Justice Statistics, Issue 16: June Quarter 2006

Recorded Crime June Quarter 2006

Darwin – key findings*

Explanatory Notes

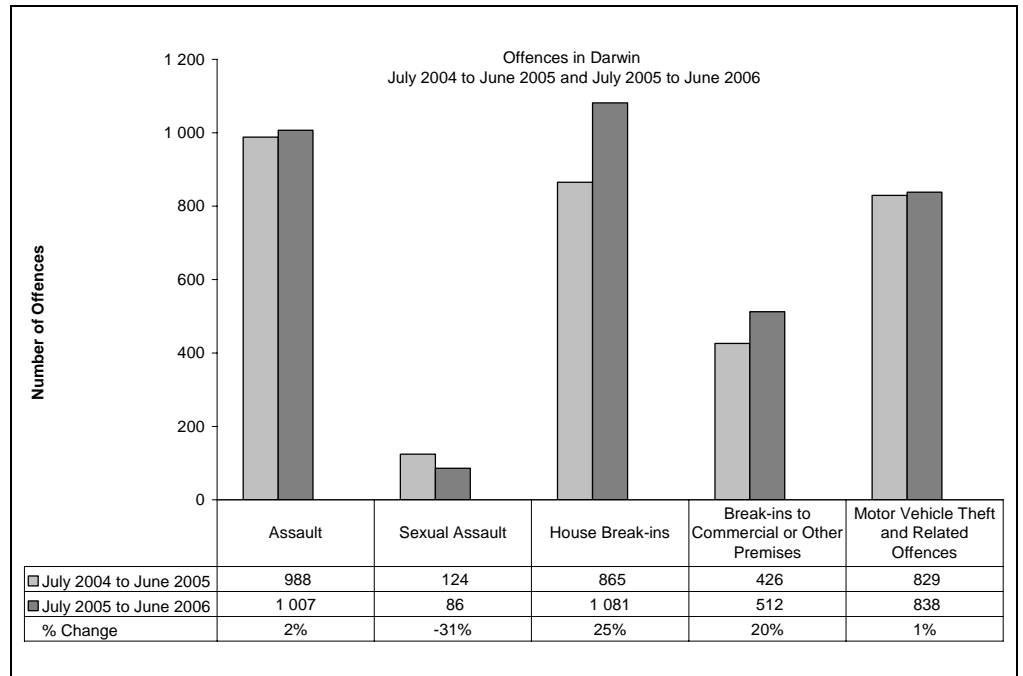
Largely as a result of its small population, statistics in the Northern Territory can be highly volatile with large swings from one period to the next.

Consequently recorded crime statistics are presented over an extended two-year period to present the current period's data within the context of any longer term trends.

The underlying average smooths out volatility and identifies major changes in the level of crime.

TWELVE-MONTH COMPARISON

Twelve-month figures provide comparable information on how crime is tracking from one 12 month period to the next.



Assault

During the 12 months to the end of June 2006 a total of 1007 *assault* offences were recorded, **2% (19) more** than the previous 12 months.

Sexual Assault

During the 12 months to the end of June 2006 a total of 86 *sexual assault* offences were recorded, **31% (38) less** than the previous 12 months.

House Break-ins

During the 12 months to the end of June 2006 a total of 1081 *house break-ins* were recorded, **25% (216) more** than the previous 12 months.

Break-ins to Commercial or Other Premises

During the 12 months to the end of June 2006 a total of 512 *break-ins to commercial or other premises* were recorded, **20% (86) more** than the previous 12 months.

Motor Vehicle Theft and Related Offences

During the 12 months to the end of June 2006 a total of 838 *motor vehicle theft and related offences* were recorded, **1% (9) more** than the previous 12 months.

* Source: The Northern Territory Quarterly Crime & Justice Statistics, Issue 16: June Quarter 2006

Recorded Crime June Quarter 2006

Palmerston – key findings*

Explanatory Notes

Largely as a result of its small population, statistics in the Northern Territory can be highly volatile with large swings from one period to the next.

Consequently recorded crime statistics are presented over an extended two-year period to present the current period's data within the context of any longer term trends.

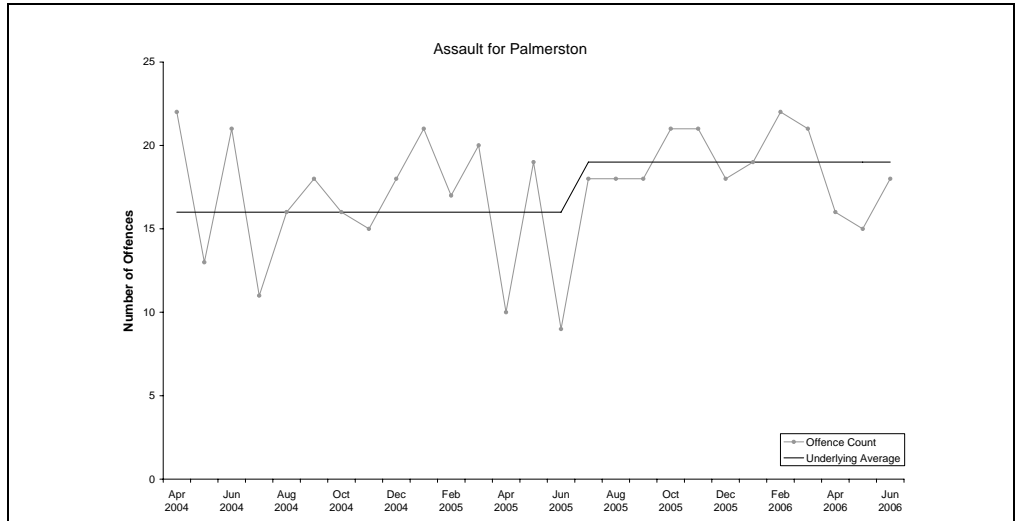
The underlying average smooths out volatility and identifies major changes in the level of crime.

ASSAULT

Underlying average – The underlying average level of recorded *assault* offences has ranged between 16 and 19 offences per month during the past nine quarters. Its current level of **19 per month** is at the higher end of the range.

Trend – Over the past 12 months no trend was identified.

Quarterly comparisons – There were 49 recorded *assault* offences in Palmerston in the current quarter, a **decrease of 21% (13)** from the previous quarter, but an increase of 29% (11) from the same quarter the previous year.

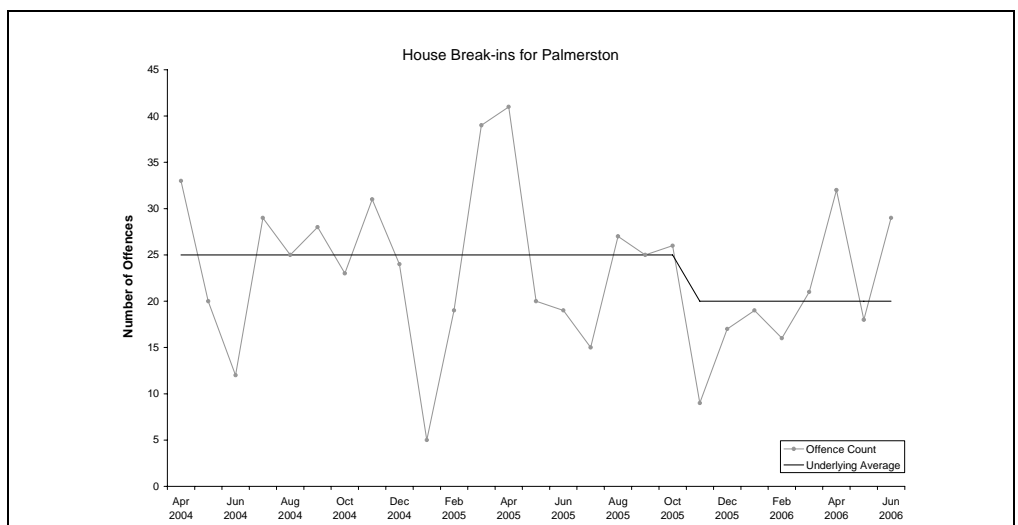


HOUSE BREAK-INS

Underlying average – The underlying average level of *house break-ins* has ranged between 20 and 25 offences per month during the past nine quarters. Its current level of **20 per month** is at the lower end of the range.

Trend – Over the past 12 months no trend was identified.

Quarterly comparisons – There were 79 *house break-ins* in the current quarter, an **increase of 41% (23)** from the previous quarter, but a decrease of 1% (1) from the same quarter the previous year.



* Source: The Northern Territory Quarterly Crime & Justice Statistics, Issue 16: June Quarter 2006

Recorded Crime June Quarter 2006

Palmerston – key findings*

Explanatory Notes

Largely as a result of its small population, statistics in the Northern Territory can be highly volatile with large swings from one period to the next.

Consequently recorded crime statistics are presented over an extended two-year period to present the current period's data within the context of any longer term trends.

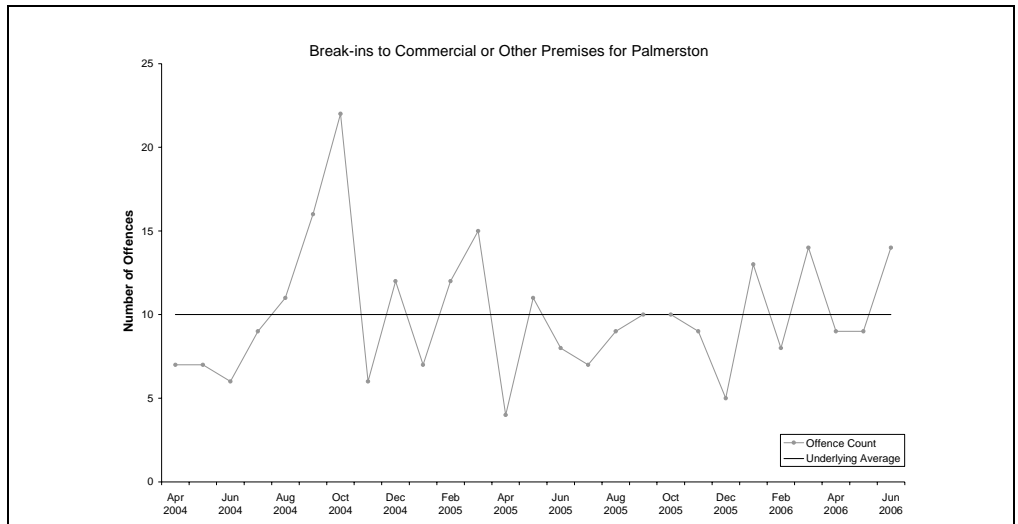
The underlying average smooths out volatility and identifies major changes in the level of crime.

BREAK-INS TO COMMERCIAL OR OTHER PREMISES

Underlying average – The underlying average level of *break-ins to commercial or other premises* has remained stable at **10 offences per month** during the past nine quarters.

Trend – Over the past 12 months no trend was identified.

Quarterly comparisons – There were 32 *break-ins to commercial or other premises* in the current quarter, a **decrease of 9% (3)** from the previous quarter, but an increase of 39% (9) from the same quarter the previous year.

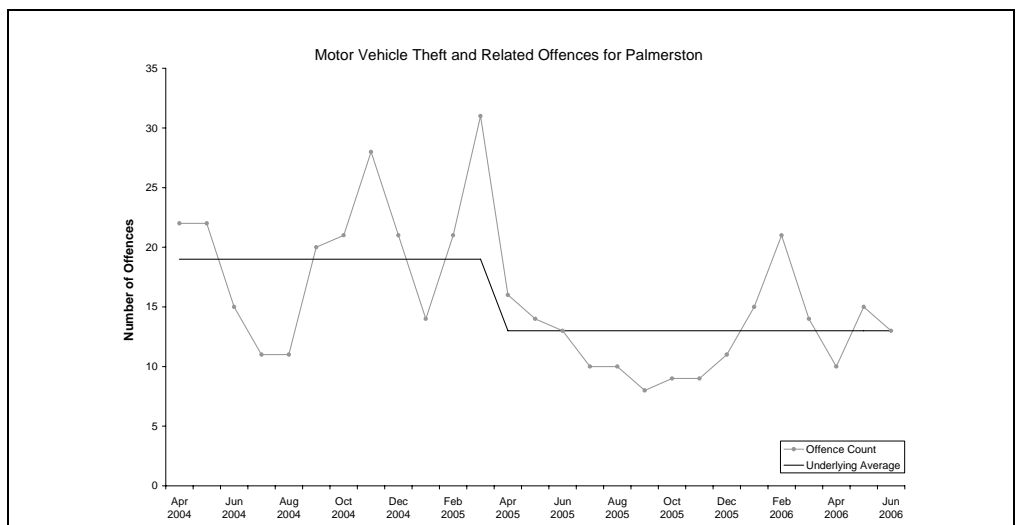


MOTOR VEHICLE THEFT AND RELATED OFFENCES

Underlying average – The underlying average level of *motor vehicle theft and related offences* has ranged between 13 and 19 offences per month during the past nine quarters. Its current level of **13 per month** is at the lower end of the range.

Trend – Over the past 12 months no trend was identified.

Quarterly comparisons – There were 38 recorded *motor vehicle theft and related offences* in the current quarter, a **decrease of 24% (12)** from the previous quarter and a decrease of 12% (5) from the same quarter the previous year.



* Source: The Northern Territory Quarterly Crime & Justice Statistics, Issue 16: June Quarter 2006

Recorded Crime June Quarter 2006

Palmerston – key findings*

Explanatory Notes

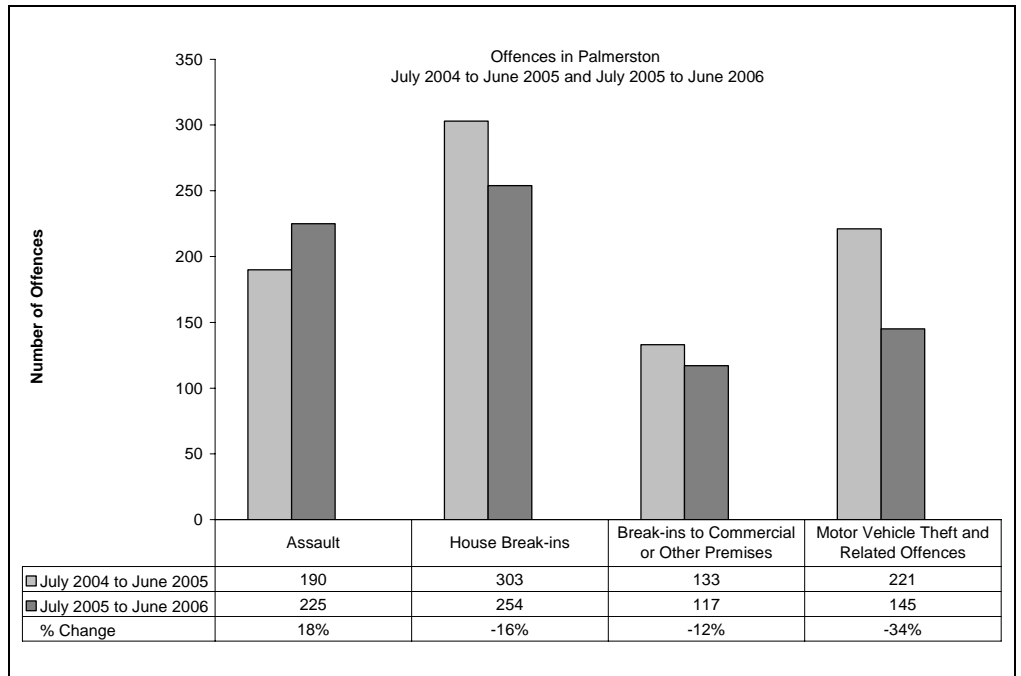
Largely as a result of its small population, statistics in the Northern Territory can be highly volatile with large swings from one period to the next.

Consequently recorded crime statistics are presented over an extended two-year period to present the current period's data within the context of any longer term trends.

The underlying average smooths out volatility and identifies major changes in the level of crime.

TWELVE-MONTH COMPARISON

Twelve-month figures provide comparable information on how crime is tracking from one 12 month period to the next.



Assault

During the 12 months to the end of June 2006 a total of 225 *assault* offences were recorded, **18% (35) more** than the previous 12 months.

House Break-ins

During the 12 months to the end of June 2006 a total of 254 *house break-ins* were recorded, **16% (49) less** than the previous 12 months.

Break-ins to Commercial or Other Premises

During the 12 months to the end of June 2006 a total of 117 *break-ins to commercial or other premises* were recorded, **12% (16) less** than the previous 12 months.

Motor Vehicle Theft and Related Offences

During the 12 months to the end of June 2006 a total of 145 *motor vehicle theft and related offences* were recorded, **34% (76) less** than the previous 12 months.

* Source: The Northern Territory Quarterly Crime & Justice Statistics, Issue 16: June Quarter 2006

Recorded Crime June Quarter 2006

Alice Springs – key findings*

Explanatory Notes

Largely as a result of its small population, statistics in the Northern Territory can be highly volatile with large swings from one period to the next.

Consequently recorded crime statistics are presented over an extended two-year period to present the current period's data within the context of any longer term trends.

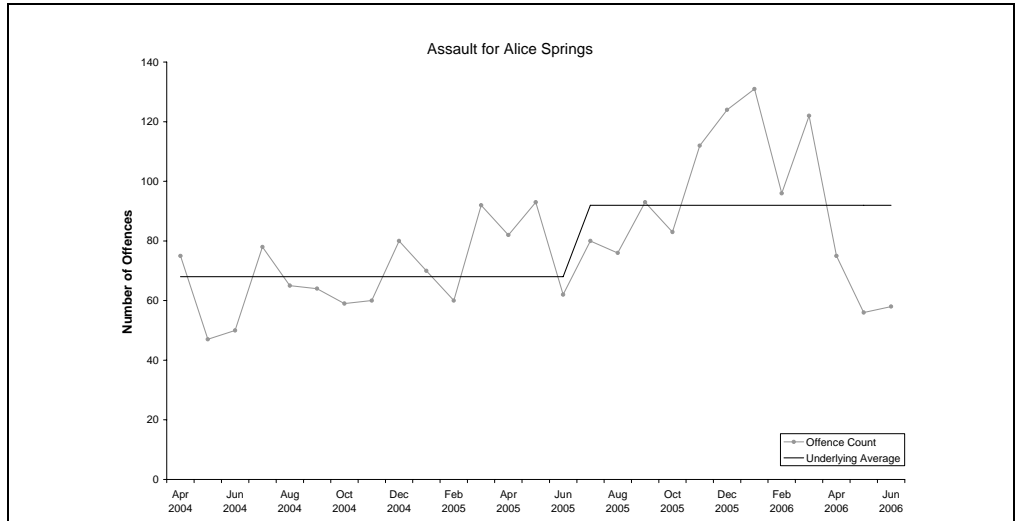
The underlying average smooths out volatility and identifies major changes in the level of crime.

ASSAULT

Underlying average – The underlying average level of recorded *assault* offences has ranged between 68 and 92 offences during the past nine quarters. Its current level of **92 per month** is at the higher end of the range.

Trend – Over the past 12 months no trend was identified.

Quarterly comparisons – There were 189 recorded *assault* offences in Alice Springs in the current quarter, a **decrease of 46% (160)** from the previous quarter and a decrease of 20% (48) from the same quarter the previous year.

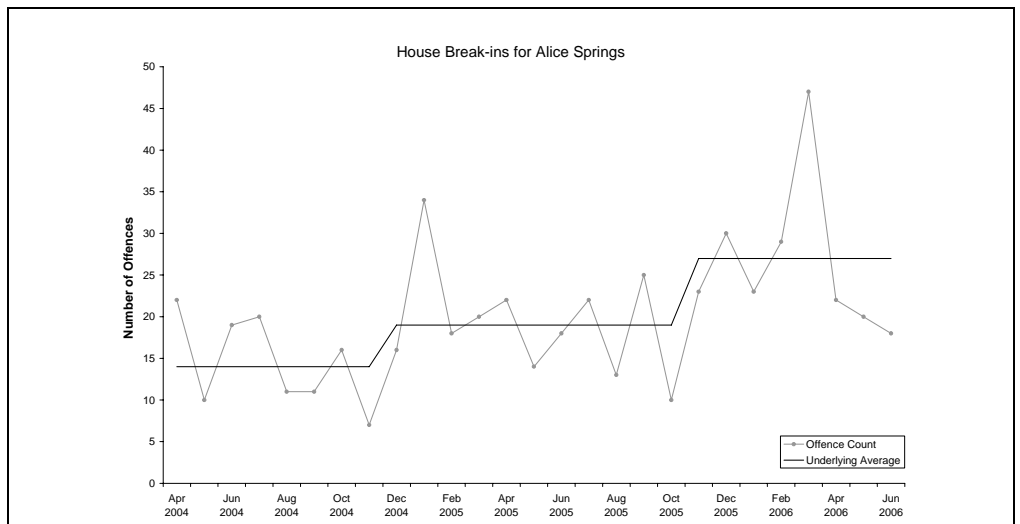


HOUSE BREAK-INS

Underlying average – The underlying average level of *house break-ins* has ranged between 14 and 27 offences per month during the past nine quarters. Its current level of **27 per month** is at the higher end of the range.

Trend – Over the past 12 months no trend was identified.

Quarterly comparisons – There were 60 *house break-ins* in the current quarter, a **decrease of 39% (39)** from the previous quarter, but an increase of 11% (6) from the same quarter the previous year.



* Source: The Northern Territory Quarterly Crime & Justice Statistics, Issue 16: June Quarter 2006

Recorded Crime June Quarter 2006

Alice Springs – key findings*

Explanatory Notes

Largely as a result of its small population, statistics in the Northern Territory can be highly volatile with large swings from one period to the next.

Consequently recorded crime statistics are presented over an extended two-year period to present the current period's data within the context of any longer term trends.

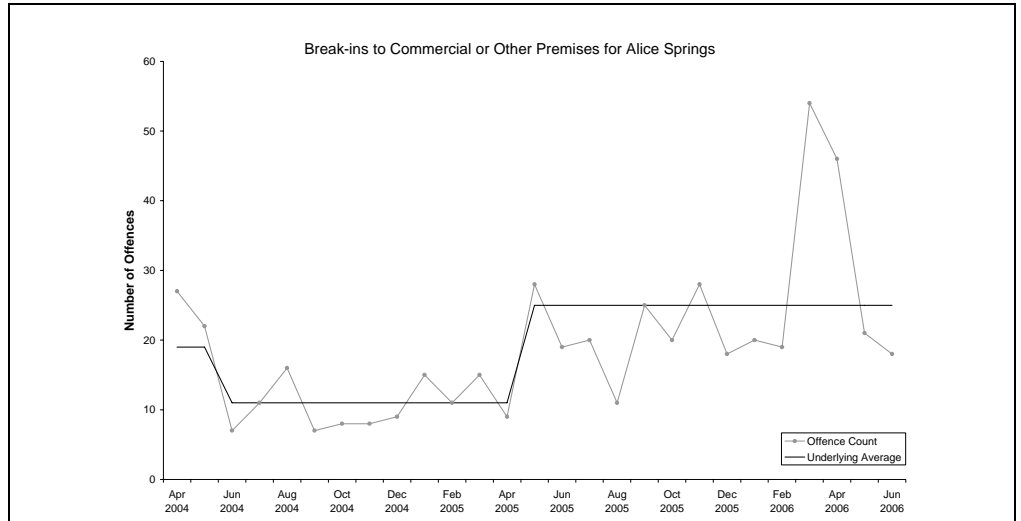
The underlying average smooths out volatility and identifies major changes in the level of crime.

BREAK-INS TO COMMERCIAL OR OTHER PREMISES

Underlying average – The underlying average level of *break-ins to commercial or other premises* has ranged between 11 and 25 offences per month during the past nine quarters. Its current level of **25 per month** is at the higher end of the range.

Trend – Over the past 12 months no trend was identified.

Quarterly comparisons – There were 85 *break-ins to commercial or other premises* in the current quarter, a **decrease of 9% (8)** from the previous quarter, but an increase of 52% (29) from the same quarter the previous year.

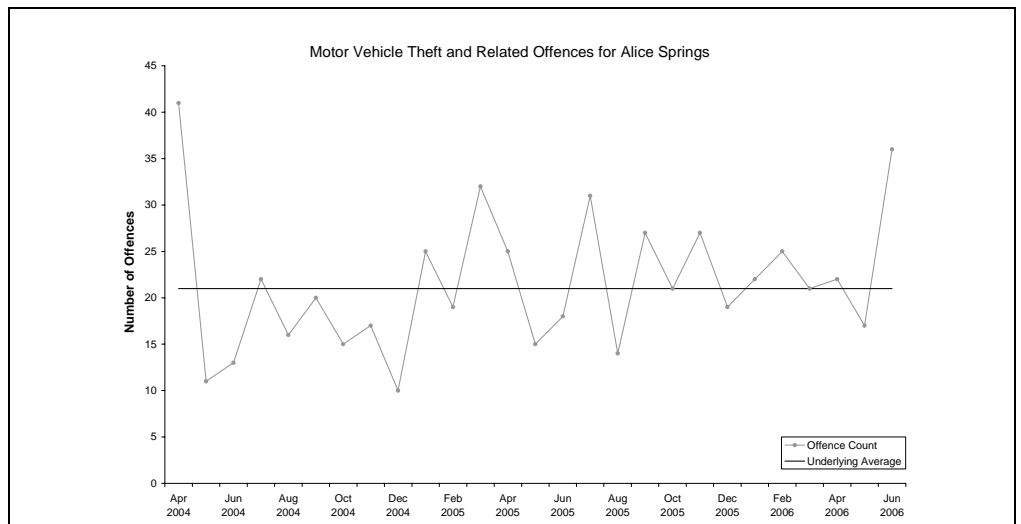


MOTOR VEHICLE THEFT AND RELATED OFFENCES

Underlying average – The underlying average level of recorded *motor vehicle theft and related offences* has remained stable at **21 offences per month** during the past nine quarters.

Trend – Over the past 12 months no trend was identified.

Quarterly comparisons – There were 75 *motor vehicle theft and related offences* in the current quarter, an **increase of 10% (7)** from the previous quarter and an increase of 29% (17) from the same quarter the previous year.



* Source: The Northern Territory Quarterly Crime & Justice Statistics, Issue 16: June Quarter 2006

Recorded Crime June Quarter 2006

Alice Springs – key findings*

Explanatory Notes

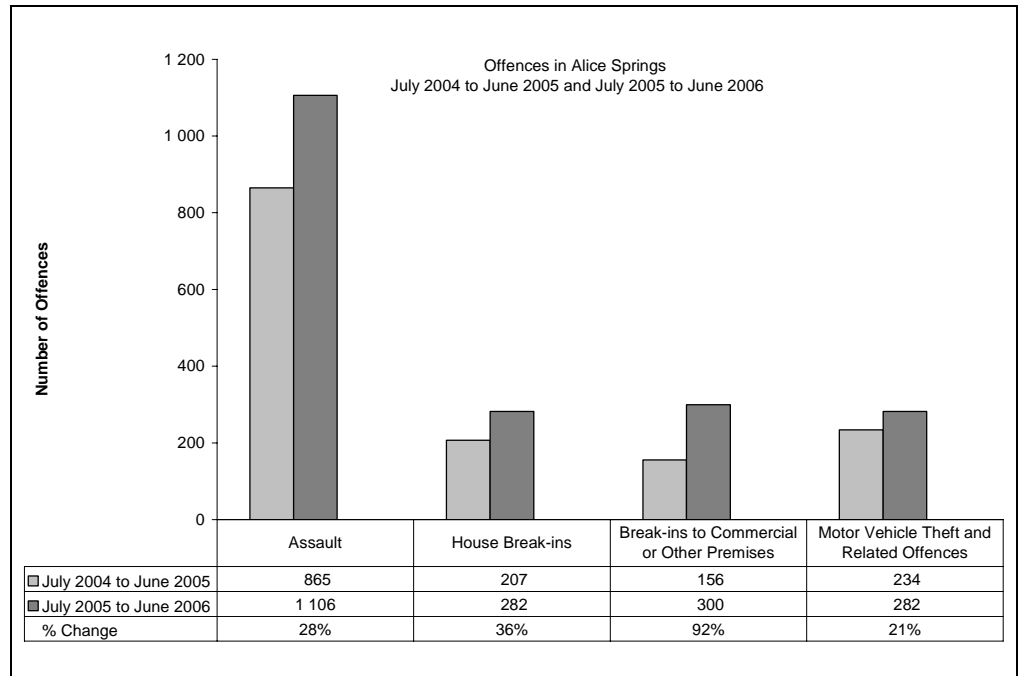
Largely as a result of its small population, statistics in the Northern Territory can be highly volatile with large swings from one period to the next.

Consequently recorded crime statistics are presented over an extended two-year period to present the current period's data within the context of any longer term trends.

The underlying average smooths out volatility and identifies major changes in the level of crime.

TWELVE-MONTH COMPARISON

Twelve-month figures provide comparable information on how crime is tracking from one 12 month period to the next.



Assault

During the 12 months to the end of June 2006 a total of 1106 *assault* offences were recorded, **28% (241) more** than the previous 12 months.

House Break-ins

During the 12 months to the end of June 2006 a total of 282 *house break-ins* were recorded, **36% (75) more** than the previous 12 months.

Break-ins to Commercial or Other Premises

During the 12 months to the end of June 2006 a total of 300 *break-ins to commercial or other premises* were recorded, **92% (144) more** than the previous 12 months.

Motor Vehicle Theft and Related Offences

During the 12 months to the end of June 2006 a total of 282 *motor vehicle theft and related offences* were recorded, **21% (48) more** than the previous 12 months.

* Source: The Northern Territory Quarterly Crime & Justice Statistics, Issue 16: June Quarter 2006

Recorded Crime June Quarter 2006

Katherine – key findings*

Explanatory Notes

Largely as a result of its small population, statistics in the Northern Territory can be highly volatile with large swings from one period to the next.

Consequently recorded crime statistics are presented over an extended two-year period to present the current period's data within the context of any longer term trends.

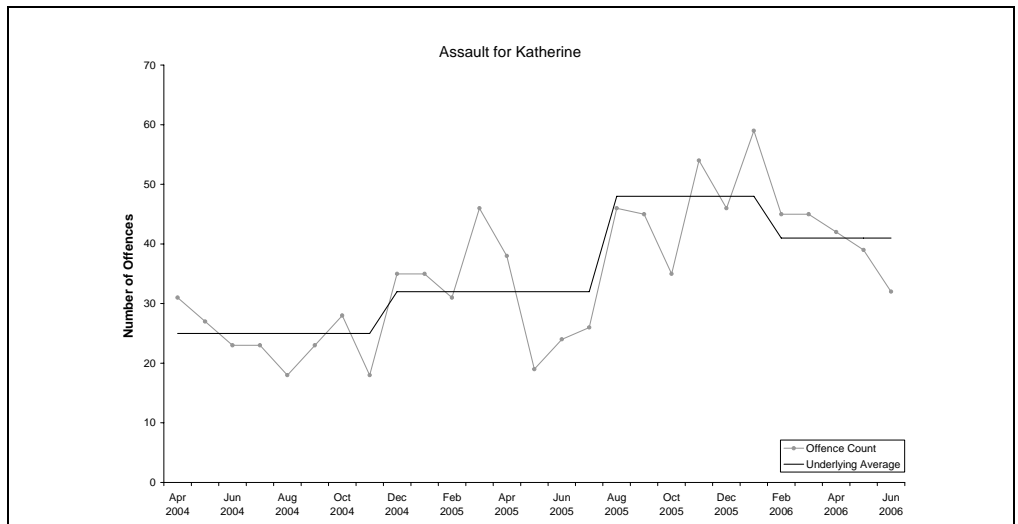
The underlying average smooths out volatility and identifies major changes in the level of crime.

ASSAULT

Underlying average – The underlying average level of recorded *assault* offences has ranged between 25 and 48 offences per month during the past nine quarters. Its current level of **41 per month** is in the middle of the range.

Trend – Over the past 12 months no trend was identified.

Quarterly comparisons – There were 113 recorded *assault* offences in Katherine in the current quarter, a **decrease of 24% (36)** from the previous quarter, but an increase of 40% (32) from the same quarter the previous year.

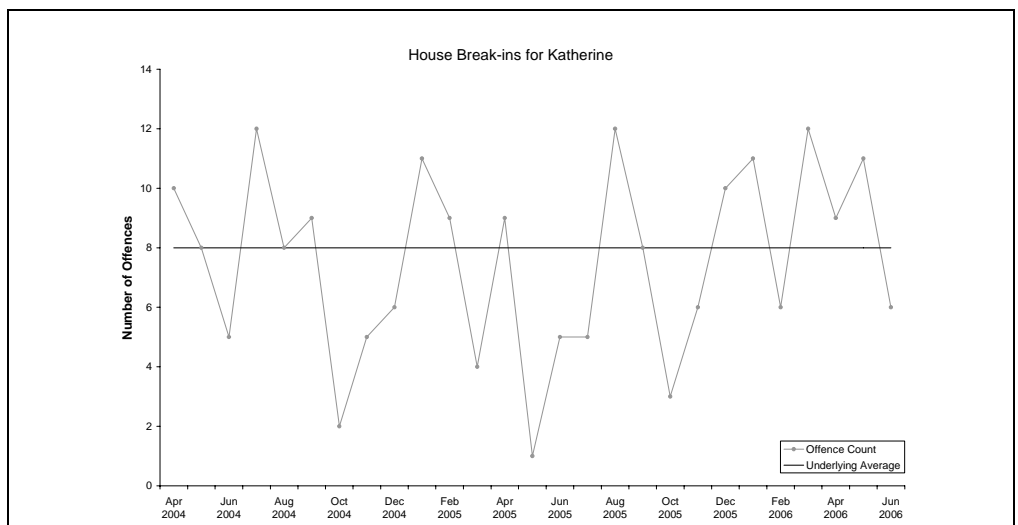


HOUSE BREAK-INS

Underlying average – The underlying average level of *house break-ins* has remained stable at **8 offences per month** during the past nine quarters.

Trend – Over the past 12 months no trend was identified.

Quarterly comparisons – There were 26 *house break-ins* in the current quarter, a **decrease of 10% (3)** from the previous quarter, but an increase of 73% (11) from the same quarter the previous year.



* Source: The Northern Territory Quarterly Crime & Justice Statistics, Issue 16: June Quarter 2006

Recorded Crime June Quarter 2006

Katherine – key findings*

Explanatory Notes

Largely as a result of its small population, statistics in the Northern Territory can be highly volatile with large swings from one period to the next.

Consequently recorded crime statistics are presented over an extended two-year period to present the current period's data within the context of any longer term trends.

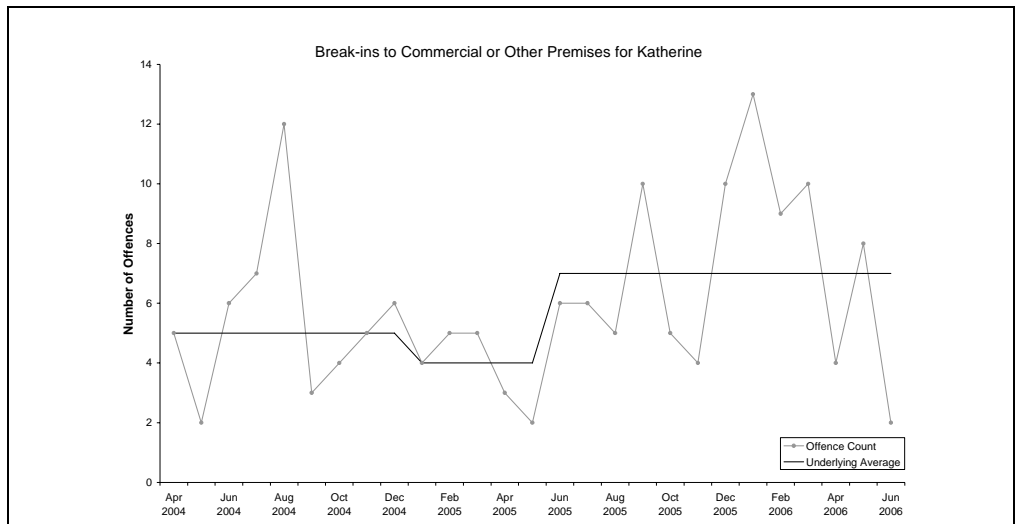
The underlying average smooths out volatility and identifies major changes in the level of crime.

BREAK-INS TO COMMERCIAL OR OTHER PREMISES

Underlying average – The underlying average level of *break-ins to commercial or other premises* has ranged between 4 and 7 offences per month during the past nine quarters. Its current level of **7 per month** is at the higher end of the range.

Trend – Over the past 12 months no trend was identified.

Quarterly comparisons – There were 14 *break-ins to commercial or other premises* in the current quarter, a **decrease of 56% (18)** from the previous quarter, but an increase of 27% (3) from the same quarter the previous year.

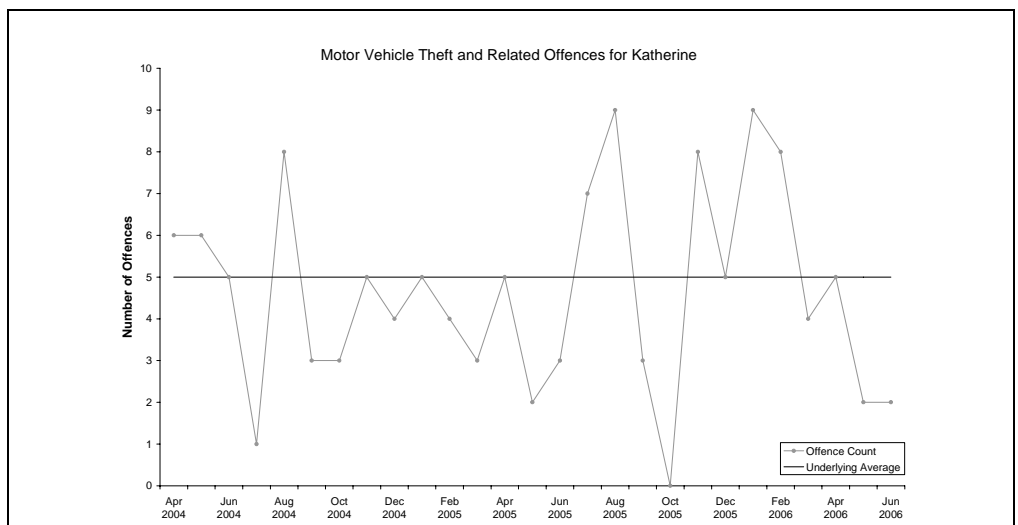


MOTOR VEHICLE THEFT AND RELATED OFFENCES

Underlying average – The underlying average level of recorded *motor vehicle theft and related offences* has remained stable at **5 offences per month** during the past nine quarters.

Trend – Over the past 12 months no trend was identified.

Quarterly comparisons – There were 9 *motor vehicle theft and related offences* in the current quarter, a **decrease of 57% (12)** from the previous quarter and a decrease of 10% (1) from the same quarter the previous year.



* Source: The Northern Territory Quarterly Crime & Justice Statistics, Issue 16: June Quarter 2006

Recorded Crime June Quarter 2006

Katherine – key findings*

Explanatory Notes

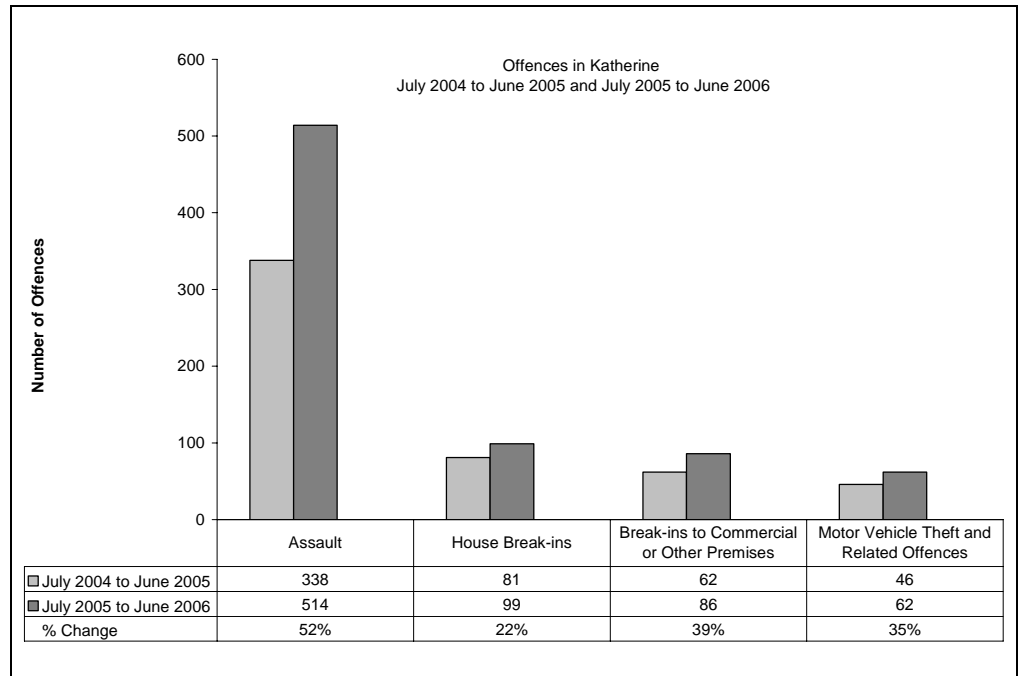
Largely as a result of its small population, statistics in the Northern Territory can be highly volatile with large swings from one period to the next.

Consequently recorded crime statistics are presented over an extended two-year period to present the current period's data within the context of any longer term trends.

The underlying average smooths out volatility and identifies major changes in the level of crime.

TWELVE-MONTH COMPARISON

Twelve-month figures provide comparable information on how crime is tracking from one 12 month period to the next.



Assault

During the 12 months to the end of June 2006 a total of 514 *assault* offences were recorded, **52% (176) more** than the previous 12 months.

House Break-ins

During the 12 months to the end of June 2006 a total of 99 *house break-ins* were recorded, **22% (18) more** than the previous 12 months.

Break-ins to Commercial or Other Premises

During the 12 months to the end of June 2006 a total of 86 *break-ins to commercial or other premises* were recorded, **39% (24) more** than the previous 12 months.

Motor Vehicle Theft and Related Offences

During the 12 months to the end of June 2006 a total of 62 *motor vehicle theft and related offences* were recorded, **35% (16) more** from the previous 12 months.

* Source: The Northern Territory Quarterly Crime & Justice Statistics, Issue 16: June Quarter 2006

Recorded Crime June Quarter 2006

Tennant Creek – key findings*

Explanatory Notes

Largely as a result of its small population, statistics in the Northern Territory can be highly volatile with large swings from one period to the next.

Consequently recorded crime statistics are presented over an extended two-year period to present the current period's data within the context of any longer term trends.

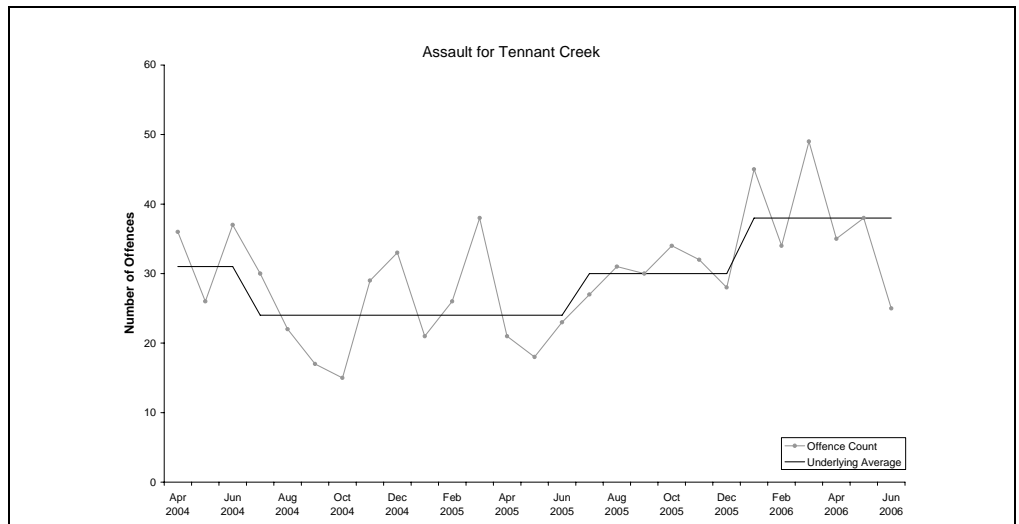
The underlying average smooths out volatility and identifies major changes in the level of crime.

ASSAULT

Underlying average – The underlying average level of recorded *assault* offences has ranged between 24 and 38 offences per month during the past nine quarters. Its current level of **38 per month** is at the higher end of the range.

Trend – Over the past 12 months no trend was identified.

Quarterly comparisons – There were 98 recorded *assault* offences in Tennant Creek in the current quarter, a **decrease of 23% (30)** from the previous quarter, but an increase of 58% (36) from the same quarter the previous year.

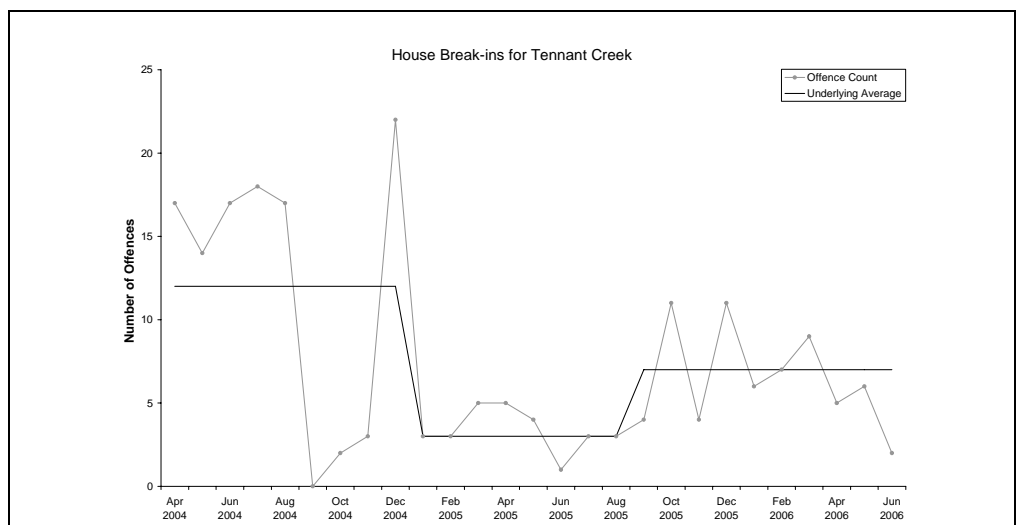


HOUSE BREAK-INS

Underlying average – The underlying average level of *house break-ins* has ranged between 3 and 12 offences per month during the past nine quarters. Its current level of **7 per month** is at the middle of the range.

Trend – Over the past 12 months no trend was identified.

Quarterly comparisons – There were 13 *house break-ins* in the current quarter, a **decrease of 41% (9)** from the previous quarter, but an increase of 30% (3) from the same quarter the previous year.



* Source: The Northern Territory Quarterly Crime & Justice Statistics, Issue 16: June Quarter 2006

Recorded Crime June Quarter 2006

Tennant Creek – key findings*

Explanatory Notes

Largely as a result of its small population, statistics in the Northern Territory can be highly volatile with large swings from one period to the next.

Consequently recorded crime statistics are presented over an extended two-year period to present the current period's data within the context of any longer term trends.

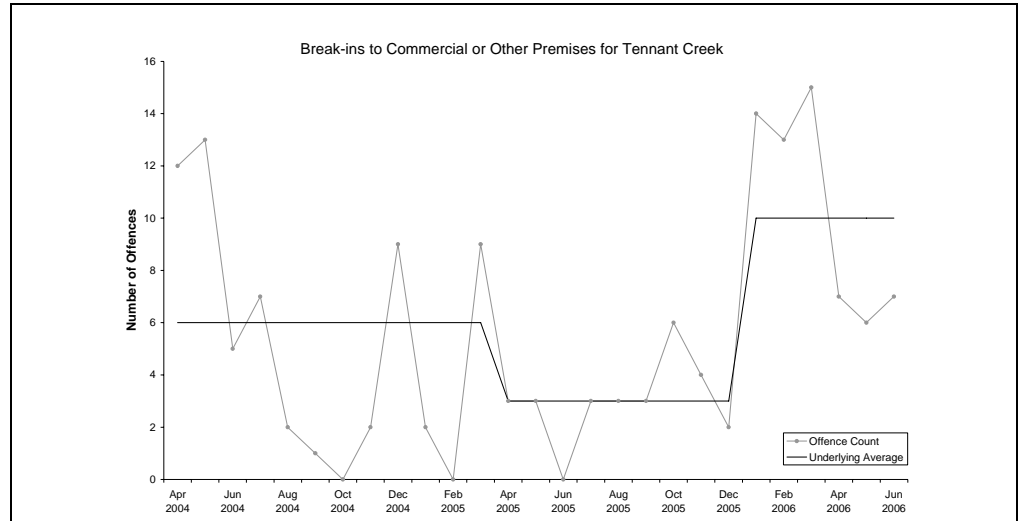
The underlying average smooths out volatility and identifies major changes in the level of crime.

BREAK-INS TO COMMERCIAL OR OTHER PREMISES

Underlying average – The underlying average level of *break-ins to commercial or other premises* has ranged between 3 and 10 offences per month during the past nine quarters. Its current level of **10 per month** is at the higher end of the range.

Trend – Over the past 12 months no trend was identified.

Quarterly comparisons – There were 20 *break-ins to commercial or other premises* in the current quarter, a **decrease of 52% (22)** from the previous quarter, but an increase of 233% (14) from the same quarter the previous year.



* Source: The Northern Territory Quarterly Crime & Justice Statistics, Issue 16: June Quarter 2006

Recorded Crime June Quarter 2006

Tennant Creek – key findings*

Explanatory Notes

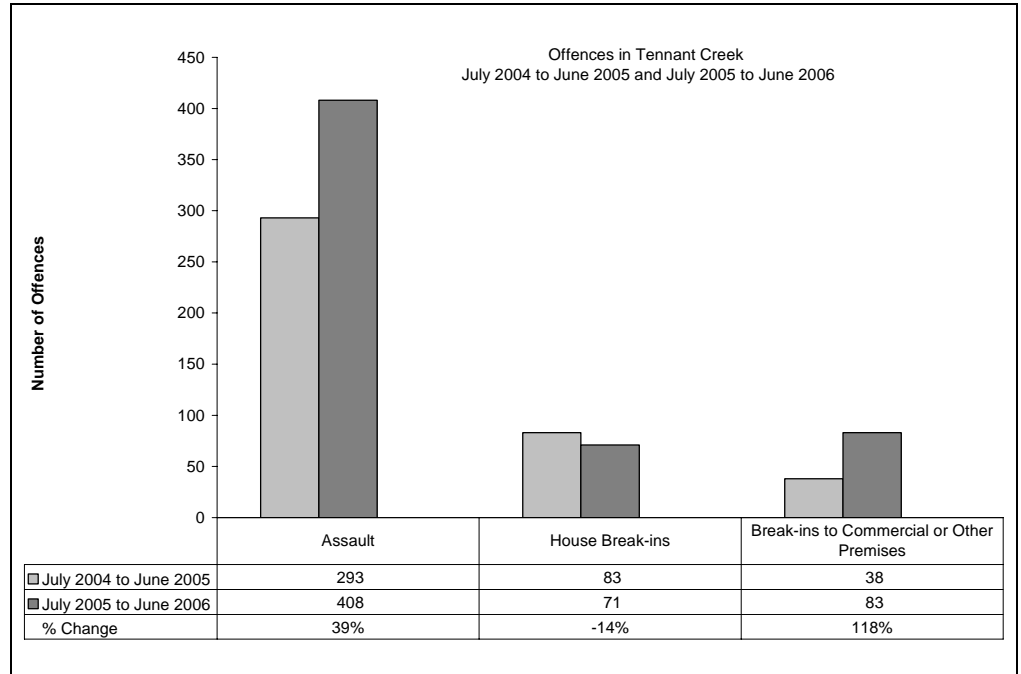
Largely as a result of its small population, statistics in the Northern Territory can be highly volatile with large swings from one period to the next.

Consequently recorded crime statistics are presented over an extended two-year period to present the current period's data within the context of any longer term trends.

The underlying average smooths out volatility and identifies major changes in the level of crime.

TWELVE-MONTH COMPARISON

Twelve-month figures provide comparable information on how crime is tracking from one 12 month period to the next.



Assault

During the 12 months to the end of June 2006 a total of 408 *assault* offences were recorded, **39% (115) more** than the previous 12 months.

House Break-ins

During the 12 months to the end of June 2006 a total of 71 *house break-ins* were recorded, **14% (12) less** than the previous 12 months.

Break-ins to Commercial or Other Premises

During the 12 months to the end of June 2006 a total of 83 *break-ins to commercial or other premises* were recorded, **118% (45) more** than the previous 12 months.

* Source: The Northern Territory Quarterly Crime & Justice Statistics, Issue 16: June Quarter 2006

Recorded Crime June Quarter 2006

Nhulunbuy – key findings*

Explanatory Notes

Largely as a result of its small population, statistics in the Northern Territory can be highly volatile with large swings from one period to the next.

Consequently recorded crime statistics are presented over an extended two-year period to present the current period's data within the context of any longer term trends.

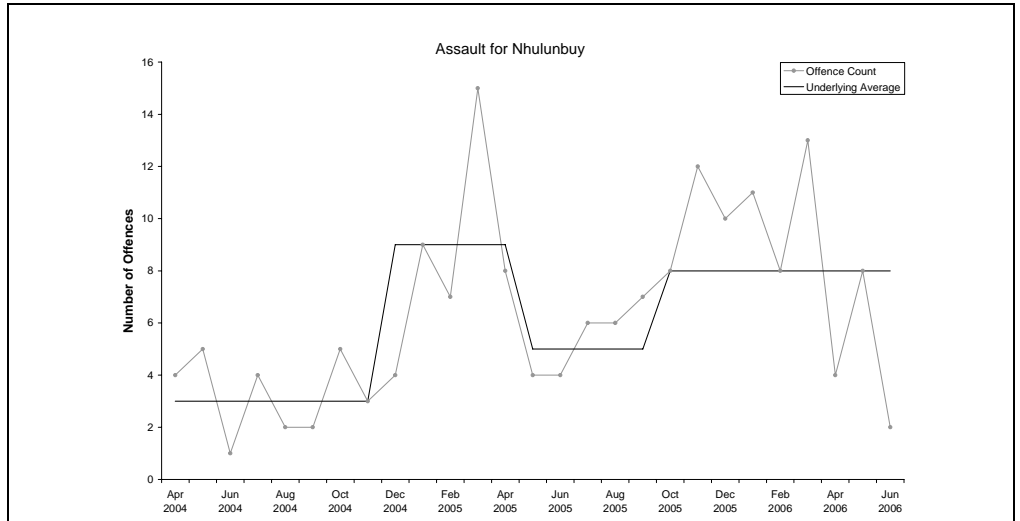
The underlying average smooths out volatility and identifies major changes in the level of crime.

ASSAULT

Underlying average – The underlying average level of recorded *assault* offences has ranged between 3 and 9 offences per month during the past nine quarters. Its current level of **8 per month** is at the higher end of the range.

Trend – Over the past 12 months no trend was identified.

Quarterly comparisons – There were 14 recorded *assault* offences in Nhulunbuy in the current quarter, a **decrease of 56% (18)** from the previous quarter and a decrease of 13% (2) from the same quarter the previous year.

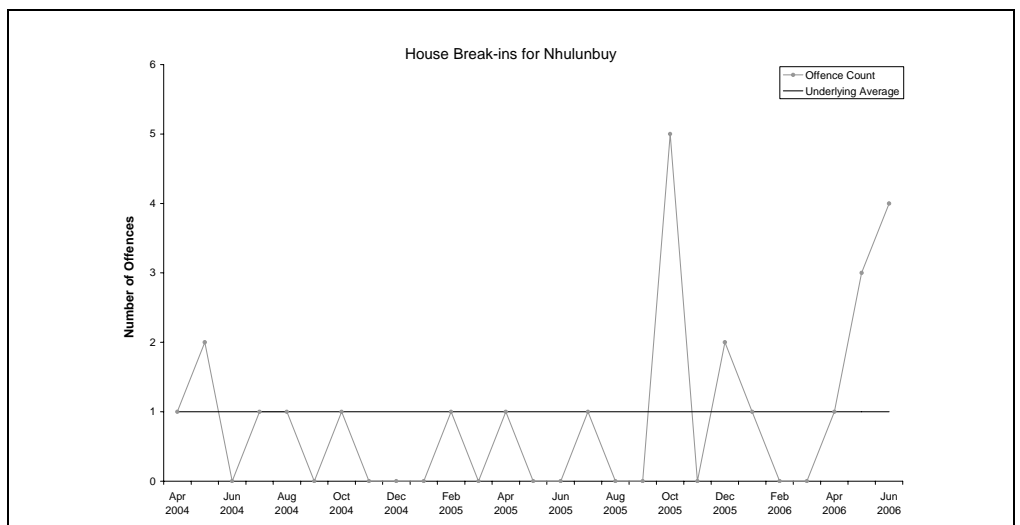


HOUSE BREAK-INS

Underlying average – The underlying average level of *house break-ins* has remained at **1 offence per month** during the past nine quarters.

Trend – Over the past 12 months no trend was identified.

Quarterly comparisons – There were 8 *house break-ins* in the current quarter, an **increase of 7** from the previous quarter and an increase 7 from the same quarter the previous year.



* Source: The Northern Territory Quarterly Crime & Justice Statistics, Issue 16: June Quarter 2006

Recorded Crime June Quarter 2006

Nhulunbuy – key findings*

Explanatory Notes

Largely as a result of its small population, statistics in the Northern Territory can be highly volatile with large swings from one period to the next.

Consequently recorded crime statistics are presented over an extended two-year period to present the current period's data within the context of any longer term trends.

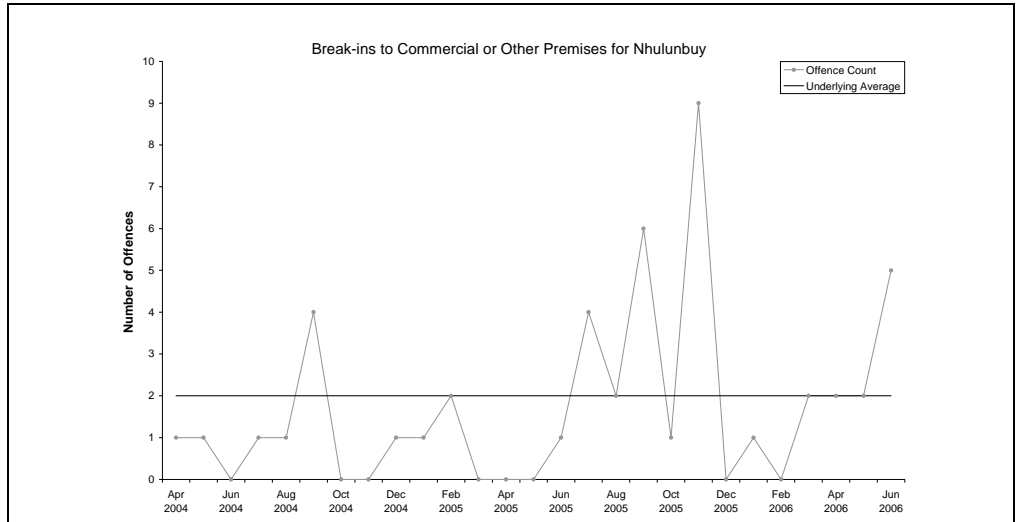
The underlying average smooths out volatility and identifies major changes in the level of crime.

BREAK-INS TO COMMERCIAL OR OTHER PREMISES

Underlying average – The underlying average level of *break-ins to commercial or other premises* has remained stable at **2 offences per month** during the past nine quarters.

Trend – Over the past 12 months no trend was identified.

Quarterly comparisons – There were 9 *break-ins to commercial or other premises* in the current quarter, an **increase of 6** from the previous quarter and an increase of 8 from the same quarter the previous year.



* Source: The Northern Territory Quarterly Crime & Justice Statistics, Issue 16: June Quarter 2006

Recorded Crime June Quarter 2006

Nhulunbuy – key findings*

Explanatory Notes

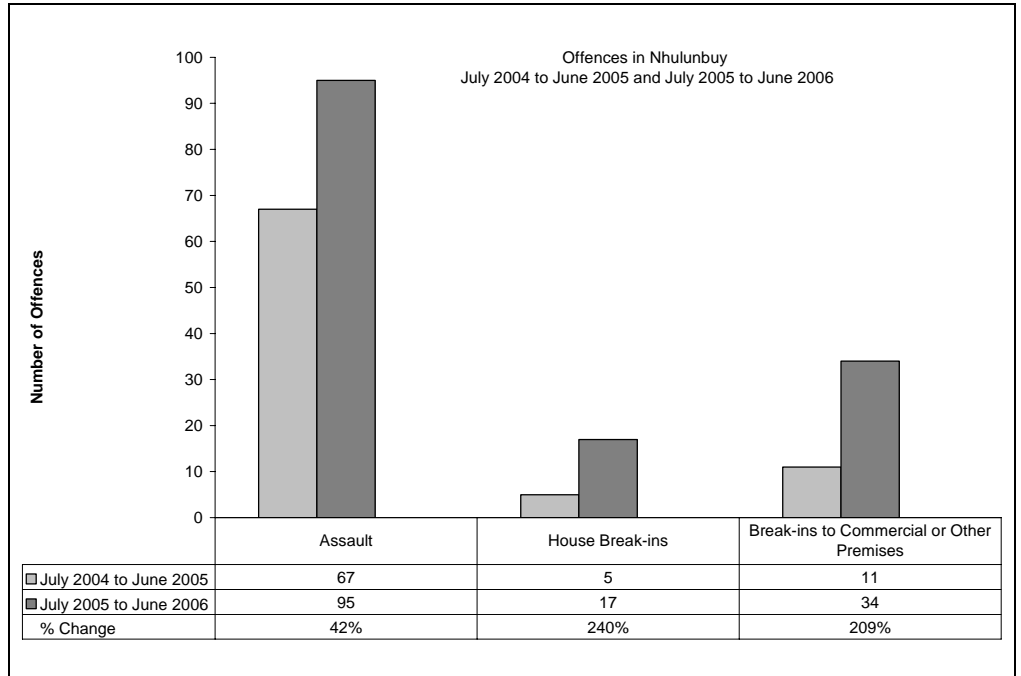
Largely as a result of its small population, statistics in the Northern Territory can be highly volatile with large swings from one period to the next.

Consequently recorded crime statistics are presented over an extended two-year period to present the current period's data within the context of any longer term trends.

The underlying average smooths out volatility and identifies major changes in the level of crime.

TWELVE-MONTH COMPARISON

Twelve-month figures provide comparable information on how crime is tracking from one 12 month period to the next.



Assault

During the 12 months to the end of June 2006 a total of 95 *assault* offences were recorded, **42% (28) more** than the previous 12 months.

House Break-ins

During the 12 months to the end of June 2006 a total of 17 *house break-ins* were recorded, **240% (12) more** than the previous 12 months.

Break-ins to Commercial or Other Premises

During the 12 months to the end of June 2006 a total of 34 *break-ins to commercial or other premises* were recorded, **209% (23) more** than the previous 12 months.

* Source: The Northern Territory Quarterly Crime & Justice Statistics, Issue 16: June Quarter 2006

Recorded Crime June Quarter 2006

Northern Territory Balance – key findings*

Explanatory Notes

Largely as a result of its small population, statistics in the Northern Territory can be highly volatile with large swings from one period to the next.

Consequently recorded crime statistics are presented over an extended two-year period to present the current period's data within the context of any longer term trends.

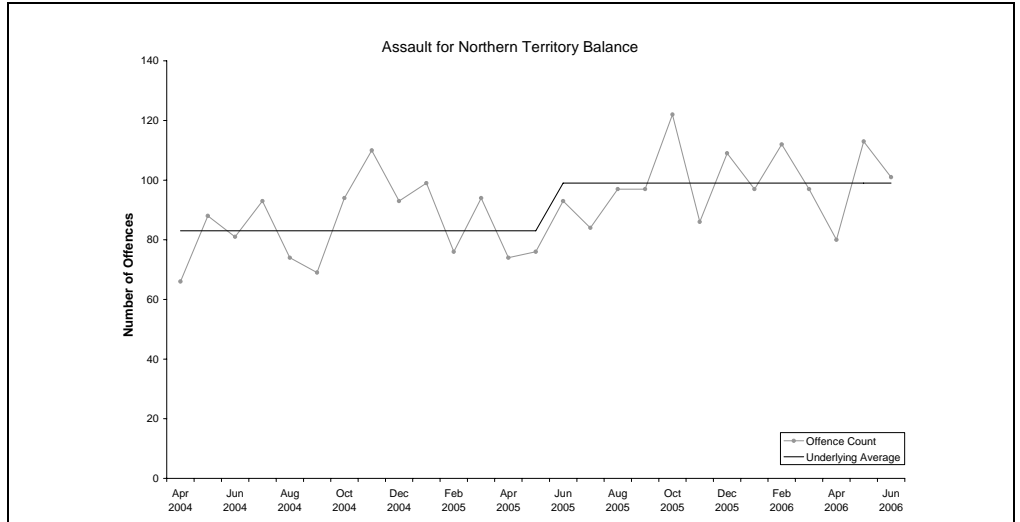
The underlying average smooths out volatility and identifies major changes in the level of crime.

ASSAULT

Underlying average – The underlying average level of recorded *assault* offences has ranged between 83 and 99 offences per month during the past nine quarters. Its current level of **99 per month** is at the higher end of the range.

Trend – Over the past 12 months no trend was identified.

Quarterly comparisons – There were 294 recorded *assault* offences in the Northern Territory Balance in the current quarter, a **decrease of 4% (12)** from the previous quarter, but an increase of 21% (51) from the same quarter the previous year.

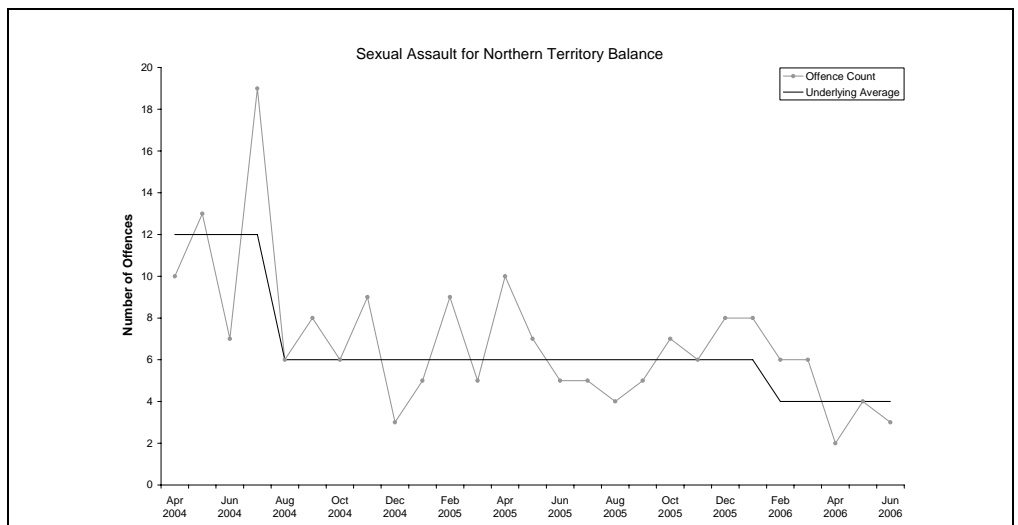


SEXUAL ASSAULT

Underlying average – The underlying average level of recorded *sexual assault* offences has ranged between 4 and 12 offences per month during the past nine quarters. Its current level of **4 per month** is at the lower end of the range.

Trend – Over the past 12 months no trend was identified.

Quarterly comparisons – There were 9 recorded *sexual assault* offences in the Northern Territory Balance in the current quarter, a **decrease of 55% (11)** from the previous quarter and a decrease of 59% (13) from the same quarter the previous year.



* Source: The Northern Territory Quarterly Crime & Justice Statistics, Issue 16: June Quarter 2006

Recorded Crime June Quarter 2006

Northern Territory Balance – key findings*

Explanatory Notes

Largely as a result of its small population, statistics in the Northern Territory can be highly volatile with large swings from one period to the next.

Consequently recorded crime statistics are presented over an extended two-year period to present the current period's data within the context of any longer term trends.

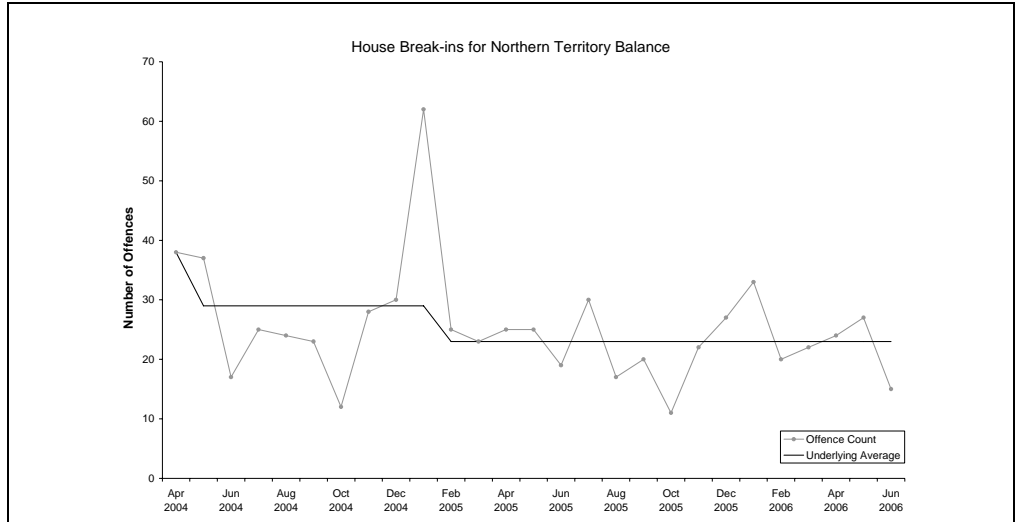
The underlying average smooths out volatility and identifies major changes in the level of crime.

HOUSE BREAK-INS

Underlying average – The underlying average level of *house break-ins* has ranged between 23 and 38 offences per month during the past nine quarters. Its current level of **23 per month** is at the lower end of the range.

Trend – Over the past 12 months no trend was identified.

Quarterly comparisons – There were 66 *house break-ins* in the current quarter, a **decrease of 12% (9)** from the previous quarter and a decrease of 4% (3) from the same quarter the previous year.

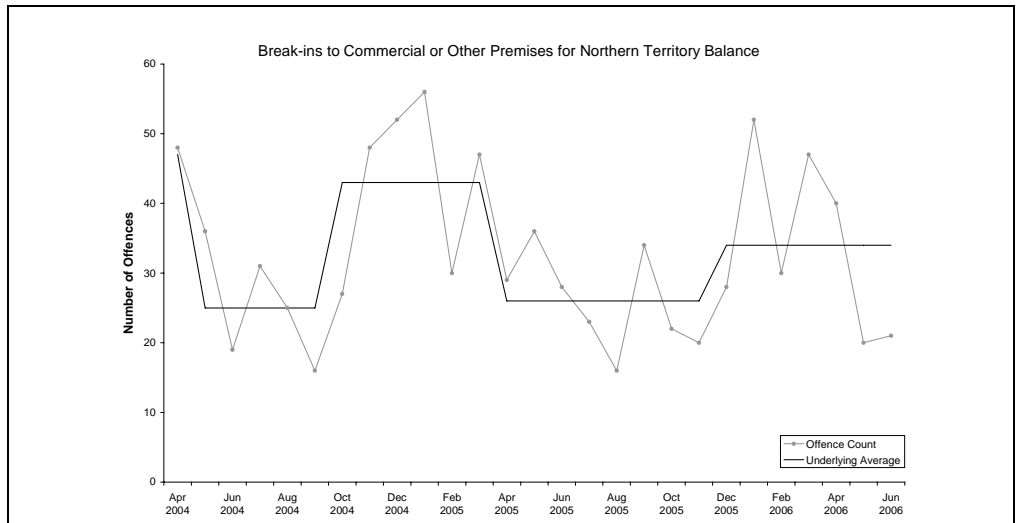


BREAK-INS TO COMMERCIAL OR OTHER PREMISES

Underlying average – The underlying average level of *break-ins to commercial or other premises* has ranged between 25 and 47 offences per month during the past nine quarters. Its current level of **34 per month** is in the middle of the range.

Trend – Over the past 12 months no trend was identified.

Quarterly comparisons – There were 81 *break-ins to commercial or other premises* in the current quarter, a **decrease of 37% (48)** from the previous quarter and a decrease of 13% (12) from the same quarter the previous year.



* Source: The Northern Territory Quarterly Crime & Justice Statistics, Issue 16: June Quarter 2006

Recorded Crime June Quarter 2006

Northern Territory Balance – key findings*

Explanatory Notes

Largely as a result of its small population, statistics in the Northern Territory can be highly volatile with large swings from one period to the next.

Consequently recorded crime statistics are presented over an extended two-year period to present the current period's data within the context of any longer term trends.

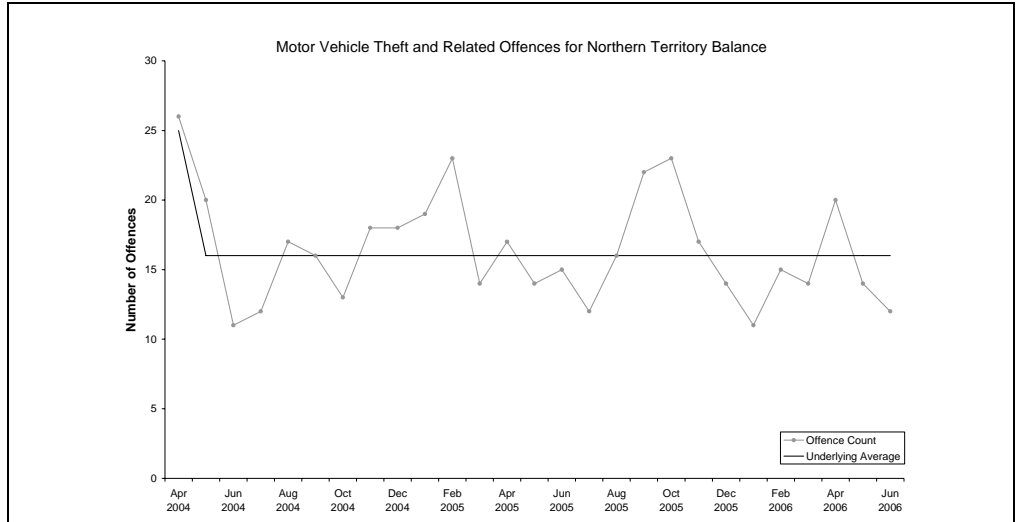
The underlying average smooths out volatility and identifies major changes in the level of crime.

MOTOR VEHICLE THEFT AND RELATED OFFENCES

Underlying average – The underlying average level of recorded *motor vehicle theft and related offences* has ranged between 16 and 25 offences per month during the past nine quarters. Its current level of **16 per month** is at the lower end of the range.

Trend – Over the past 12 months no trend was identified.

Quarterly comparisons – There were 46 *motor vehicle theft and related offences* in the current quarter, an **increase of 15% (6)** from the previous quarter, but no change from the same quarter the previous year.



* Source: The Northern Territory Quarterly Crime & Justice Statistics, Issue 16: June Quarter 2006

Recorded Crime June Quarter 2006

Northern Territory Balance – key findings*

Explanatory Notes

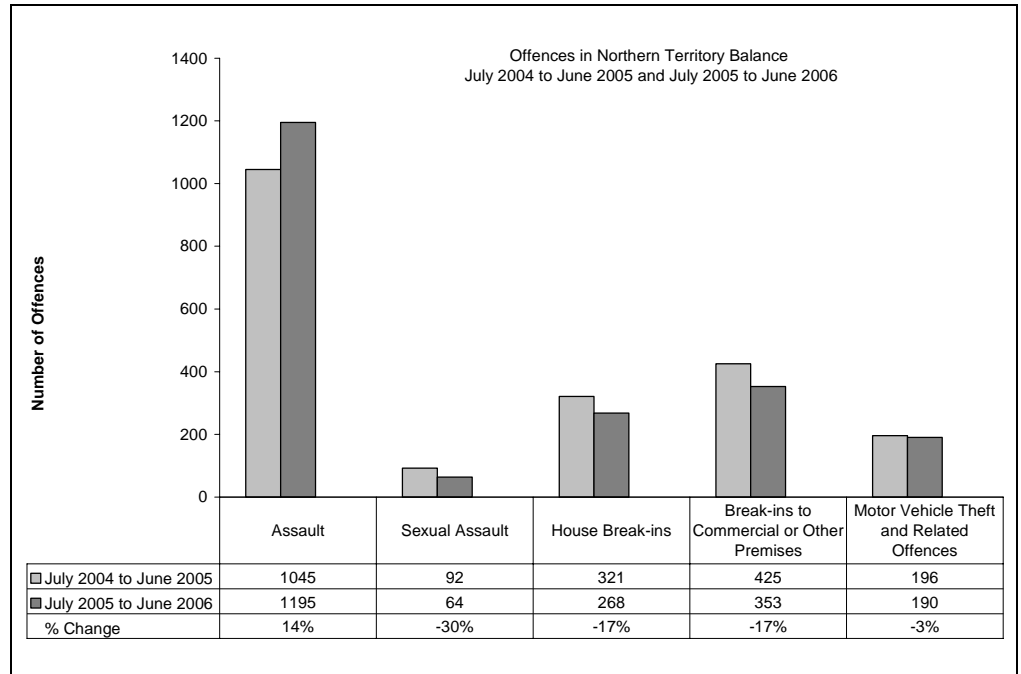
Largely as a result of its small population, statistics in the Northern Territory can be highly volatile with large swings from one period to the next.

Consequently recorded crime statistics are presented over an extended two-year period to present the current period's data within the context of any longer term trends.

The underlying average smooths out volatility and identifies major changes in the level of crime.

TWELVE-MONTH COMPARISON

Twelve-month figures provide comparable information on how crime is tracking from one 12 month period to the next.



Assault

During the 12 months to the end of June 2006 a total of 1195 *assault* offences were recorded, **14% (150) more** than the previous 12 months.

Sexual Assault

During the 12 months to the end of June 2006 a total of 64 *sexual assault* offences were recorded, **30% (28) less** than the previous 12 months.

House Break-ins

During the 12 months to the end of June 2006 a total of 268 *house break-ins* were recorded, **17% (53) less** than the previous 12 months.

Break-ins to Commercial or Other Premises

During the 12 months to the end of June 2006 a total of 353 *break-ins to commercial or other premises* were recorded, **17% (72) less** than the previous 12 months.

Motor Vehicle Theft and Related Offences

During the 12 months to the end of June 2006 a total of 190 *motor vehicle theft and related offences* were recorded, **3% (6) less** than the previous 12 months.

* Source: The Northern Territory Quarterly Crime & Justice Statistics, Issue 16: June Quarter 2006